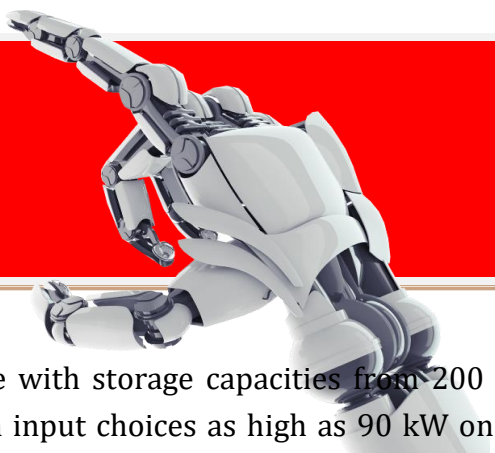


# TrueTech Energy TT - FARM Series



The **TT - FARM** series is available with storage capacities from 200 to 1,000 Liters. All tanks feature EN tank construction. With input choices as high as 90 kW on 200 through 1,000 liters models, the **TT - FARM** series can be used for maximum-demand hot water supply services

**Our Flexible, Secure And Efficient Production Processes Offers High Quality Products, Satisfied Customers, Sensible Costs, Reduced Maintenance Costs , Long Service Life , Easy Installation & Commissioning And Short Lead Times**



## STANDARD FEATURES

Hi quality electrical high power - water heaters are available- in 200 to 1,000 liters storage- - vertical round, vertical square and horizontal - with energy saving performance!

- ✦ ASTM 304L Stainless steel tank (Long Service Life)
- ✦ Stainless steel heating elements (Long Service Life)
- ✦ Galvanized steel Outer jacket & control panel
- ✦ Magnesium anodes with anode tester
- ✦ Immersion type adjustable thermostat ( 30 °C – 90 °C )
- ✦ ASME temperature and pressure relief valve
- ✦ 125 PSI working pressure
- ✦ Control voltage on/off switch with pilot light
- ✦ Temperature and pressure-gauges
- ✦ Glass / Rock wool insulation

**Efficiency** | All models meet or exceed ASHRAE energy efficiency standards

## OPTIONAL FEATURES

- ✦ ASTM 316L Stainless steel tank Outer jacket & Control panel
- ✦ Low water cut-off
- ✦ Hi temperature cutt-off
- ✦ Warning system incase of over heating & low water level
- ✦ Step controller
- ✦ Lifting lugs
- ✦ Residual Current Device
- ✦ Hand-hole (500-liters and larger capacity- models only)
- ✦ **CIRCULATING PUMP PACKAGE**
- ✦ **THERMO-MAGNETIC CUTOUT SWITCH**
- ✦ **INCOLOY SHEATH HEATING ELEMENTS**

Industrial-grade Incoloy sheathed heating elements are designed for rugged longlasting commercial service

### Warranty

2-Year limited tank warranty-  
See Commercial Warranty Certificate for - complete information

**100 % COMPLIANCE WITH  
TKDK'S REQUESTS**



## TrueTech Energy TT - FARM Series

*Large Volume Electric  
200 to 1,000 liters Capacities  
Voltages: 208, 240, 277, 380,  
415, 480, 600V and 690V  
frequencies;50/6Hz  
Vertical & Square and  
Horizontal types*

# TrueTech Energy

## TT - FARM Series



### ADVANCED FEATURES

✚ VOLT FREE OUTPUT CONTACTS FOR BMS

✚ 200 OR 240 PSI WORKING PRESSURE

✚ SAFETY DOOR INTERLOCK

Prevents opening of control panel door  
When heater power supply is on.

%100 Right Product For Your System



- ✚ ISOLATION VALVES (RELIABLE BALL VALVES)
- ✚ SPECIAL SHOCK AND VIBRATION ISOLATORS
- ✚ LAMP TEST SYSTEMS
- ✚ 316Ti TANK
- ✚ HALOGEN FREE CABLES AND CABLE CHANNELS
- ✚ DISINFECTIVE AND PREVENTIVE SYSTEM FOR LEGIONELLA BACTERIA
- ✚ PHASE PROTECTION RELAY
- ✚ SAFETY SWITCH FOR ELECTRIC COMMAND PANEL



*Factory Hydrostatic And  
Function Tests Before Shipping*

**For additional information please call the factory with  
the following:**

- ✚ Required gallons per hour recovery needed
- ✚ Temperature rise needed
- ✚ Single or Double-Wall Coil
- ✚ If steam is the energy source, the steam pressure?
- ✚ If boiler water is the energy source, the water temperature?



**True Tech Energy**  
**TT - FARM Series**

# TrueTech Energy TT - FARM Series

## PLACE OF USAGE

### INDUSTRIAL & COMMERCIAL

- Industrial Type Applications
- Farms
- Villas
- Factories
- GYMs
- Textile





Why Us



We Delivery Hi Quality Products To Every Corner Of the World



Best Manufacturing & Delivery Time

We guarantee Best Manufacturing & Delivery Time



Best Price

With effective integration , the operation cost is lower down and we will provide a more favorable price and Professional service to your Company



Customer Satisfaction

100% customer satisfaction Guarantee



Save Time & Money

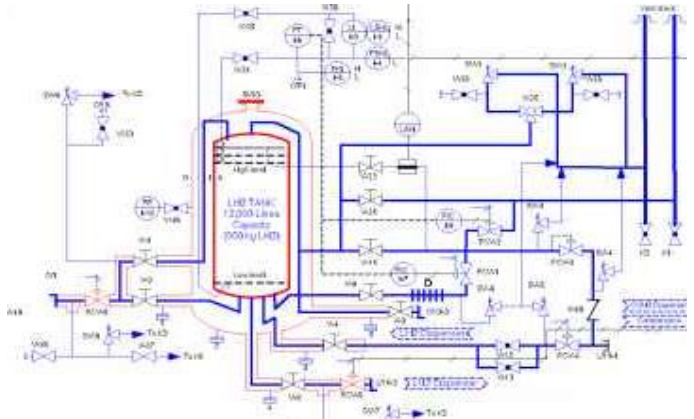
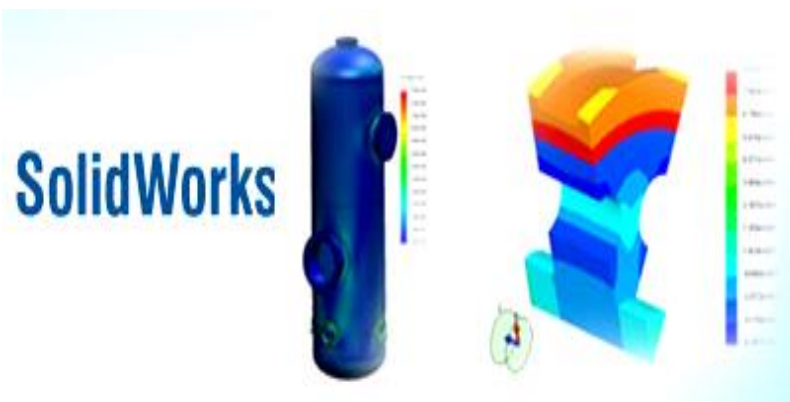




## Project-Based Technical Support

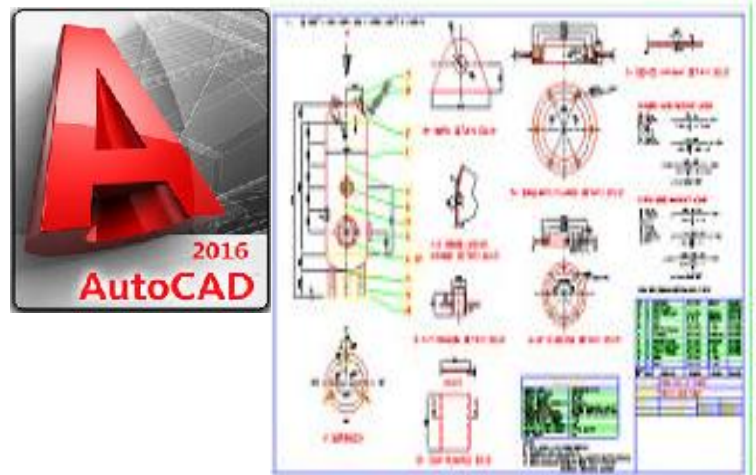
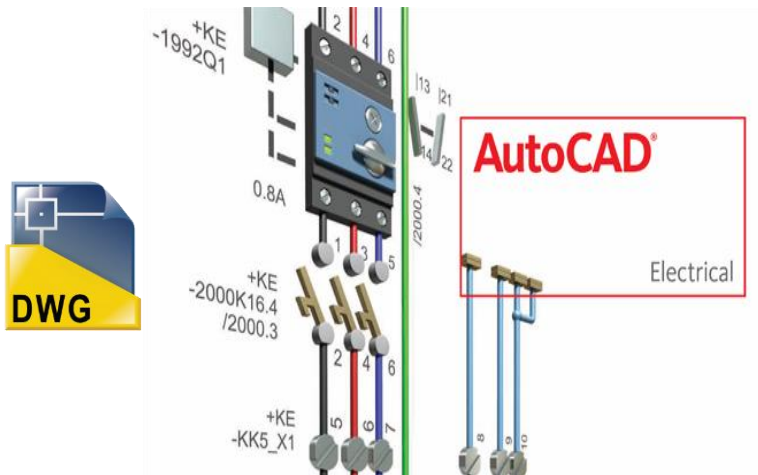
3D Mechanical Drawings

P&ID Drawings



Electrical Drawings & Diagrams

2D Mechanical Drawings

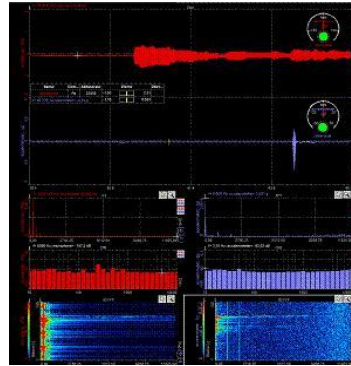
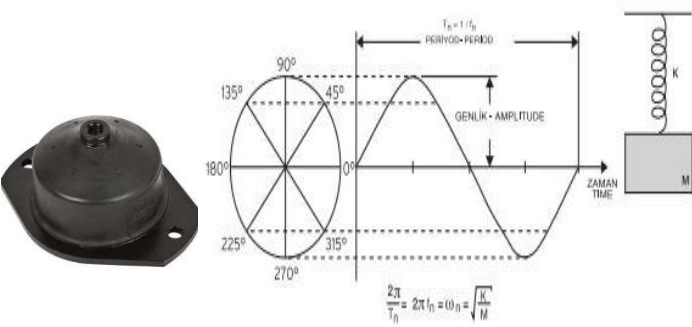




Vibration and shock analysis  
(on request )



Acoustic analysis  
(on request )



Project Management

Each Project , we will assign a Project Manager and sales person to Follow the whole process from quotation to after- sale



After-Sales  
Technical Support And Services

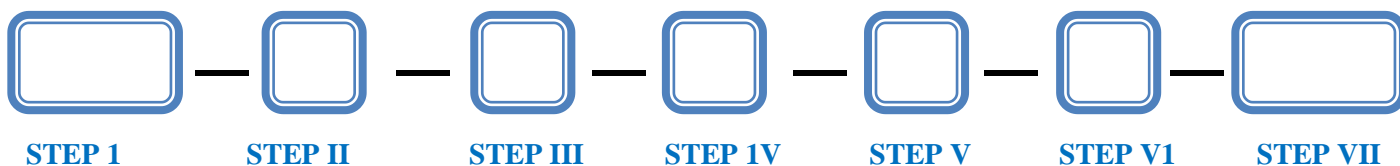


# TrueTech Energy

## TT - FARM Series



### MODEL NUMBER DESIGNATION



#### STEP 1

##### USING PLACE

TT EX	= LARGE CAPACITY ELECTRICAL WATER HEATER SERIES
TT COM	= COMMERCIAL SERIES ELECTRICAL WATER HEATER
TT EX MAR	= MARINE SERIES LARGE CAPACITY ELECTRICAL WATER HEATER
TT CMAR	= MARINE SERIES COMMERCIAL ELECTRICAL WATER HEATERS
TT YMAR	= YACHT SERIES ELECTRICAL WATER HEATERS
TT NAVY	= NAVY SERIES ELECTRICAL WATER HEATERS
TT FARM	= FARM SERIES ELECTRICAL WATER HEATERS
TT CONS	= CONSTRUCTION SERIES ELECTRICAL WATER HEATERS
TT FLOW	= INSTANT – FLOW SERIES ELECTRICAL TANKLESS WATER HEATERS
TT CONT	= CONTAINER SERIES ELECTRICAL WATER HEATERS
TT ECO	= ECONOMIC SERIES ELECTRICAL WATER HEATERS
TT HYD	= MARINE SERIES HYDROPHORE TANK



#### STEP II

##### DESIGN

EN = **EN** PRESSURE VESSEL CODE

AS = **ASME** BOILER AND PRESSURE VESSEL

UL = **UL** ELECTRIC BOOSTER AND COMMERCIAL STORAGE TANK WATER HEATER

#### STEP III

##### CONTROLLER TYPE

MC = MECHANICAL

DG = DIGITAL

PL = PLC

SS = SOLID STATE

#### STEP IV

##### STORAGE CAPACITY

#### STEP V

##### KW

#### STEP VI

##### VOLTAGE . PHASE . FREQUENCY

#### STEP VII

##### MATERIAL

G = GALVANIZE COATING

SS 304 = 304 QUALITY STAINLESS STEEL

SS 304L = 304L QUALITY STAINLESS STEEL

SS 316 = 316 QUALITY STAINLESS STEEL

SS 316L = 316L QUALITY STAINLESS STEEL

SS 316Ti = 316Ti QUALITY STAINLESS STEEL

SS CNF = CuNiFe COPPER-NICKEL-IRON ALLOYS

SS CN = CuNi 90/10 COPPER – NICKEL ALLOYS

SS DX = DUBLEX

# TrueTech Energy

## TT - FARM Series / TABLES



### RECOVERY CAPACITIES

INPUT KW	EQUIVALENT BTU/H.	UNITS	40°F (22°C)	50°F (28°C)	60°F (33°C)	70°F (39°C)	80°F (45°C)	90°F (50°C)	100°F (56°C)	110°F (61°C)	120°F (67°C)	130°F (72°C)	140°F (78°C)
6	20473,00	LPH ( LT/H)	235,0	188,0	157,0	134,0	117,0	104,0	94,0	85,0	78,0	72,0	67,0
		GPH ( GAL/H)	62,0	50,0	41,0	35,0	31,0	28,0	25,0	23,0	21,0	19,0	18,0
9	30709,00	LPH ( LT/H)	352,0	282,0	235,0	201,0	176,0	157,0	141,0	128,0	117,0	108,0	101,0
		GPH ( GAL/H)	93,0	74,0	62,0	53,0	47,0	41,0	37,0	34,0	31,0	29,0	27,0
12	40946,00	LPH ( LT/H)	470,0	376,0	313,0	268,0	235,0	209,0	188,0	171,0	157,0	145,0	134,0
		GPH ( GAL/H)	124,0	99,0	83,0	71,0	62,0	55,0	50,0	45,0	41,0	38,0	35,0
15	51183,00	LPH ( LT/H)	587,0	470,0	391,0	335,0	294,0	261,0	235,0	213,0	196,0	181,0	168,0
		GPH ( GAL/H)	155,0	124,0	103,0	89,0	78,0	69,0	62,0	56,0	52,0	48,0	44,0
18	61416,00	LPH ( LT/H)	705,0	564,0	470,0	403,0	352,0	313,0	282,0	256,0	235,0	217,0	201,0
		GPH ( GAL/H)	186,0	149,0	124,0	106,0	93,0	83,0	74,0	68,0	62,0	57,0	53,0
24	81888,00	LPH ( LT/H)	939,0	751,0	626,0	537,0	470,0	417,0	376,0	342,0	313,0	289,0	268,0
		GPH ( GAL/H)	248,0	199,0	165,0	142,0	124,0	110,0	99,0	90,0	83,0	76,0	71,0
30	102360,00	LPH ( LT/H)	1174,0	939,0	783,0	671,0	587,0	522,0	470,0	427,0	391,0	361,0	335,0
		GPH ( GAL/H)	310,0	248,0	207,0	177,0	155,0	138,0	124,0	113,0	103,0	95,0	89,0
36	122832,00	LPH ( LT/H)	1409,0	1127,0	939,0	805,0	705,0	626,0	564,0	512,0	470,0	434,0	403,0
		GPH ( GAL/H)	372,0	298,0	248,0	213,0	186,0	165,0	149,0	135,0	124,0	115,0	106,0
45	153540,00	LPH ( LT/H)	1761,0	1409,0	1174,0	1006,0	881,0	783,0	705,0	640,0	587,0	542,0	503,0
		GPH ( GAL/H)	465,0	372,0	310,0	266,0	233,0	207,0	186,0	169,0	155,0	143,0	133,0
54	184248,00	LPH ( LT/H)	2114,0	1691,0	1409,0	1208,0	1057,0	939,0	845,0	769,0	705,0	650,0	604,0
		GPH ( GAL/H)	558,0	447,0	372,0	319,0	279,0	248,0	223,0	203,0	186,0	172,0	160,0
60	204720,00	LPH ( LT/H)	2347,0	1878,0	1567,0	1340,0	1173,0	1045,0	939,0	856,0	780,0	719,0	674,0
		GPH ( GAL/H)	620,0	496,0	414,0	354,0	310,0	276,0	248,0	226,0	206,0	190,0	178,0
72	245664,00	LPH ( LT/H)	2816,0	2256,0	1877,0	1615,0	1408,0	1249,0	1128,0	1022,0	939,0	871,0	803,0
		GPH ( GAL/H)	744,0	596,0	496,0	426,0	372,0	330,0	298,0	270,0	248,0	230,0	212,0
90	307080,00	LPH ( LT/H)	3518,0	2765,0	2346,0	1985,0	1720,0	1548,0	1382,0	1269,0	1156,0	1075,0	992,0
		GPH ( GAL/H)	930,0	730,0	620,0	525,0	455,0	409,0	366,0	336,0	306,0	284,0	262,0

# TrueTech Energy

## TT - FARM Series / TABLES



### MODEL NUMBERS

INPUT KW	TT FARM SERIES					
	TANK CAPACITY ( LITER )					
	200	300	400	500	750	1000
6	TT FARM-EN-MC-200-6	TT FARM-EN-MC-300-6	TT FARM-EN-MC-400-6	TT FARM-EN-MC-500-6	TT FARM-EN-MC-750-6	TT FARM-EN-MC-1000-6
12	TT FARM-EN-MC-200-12	TT FARM-EN-MC-300-12	TT FARM-EN-MC-400-12	TT FARM-EN-MC-500-12	TT FARM-EN-MC-750-12	TT FARM-EN-MC-1000-12
15	TT FARM-EN-MC-200-15	TT FARM-EN-MC-300-15	TT FARM-EN-MC-400-15	TT FARM-EN-MC-500-15	TT FARM-EN-MC-750-15	TT FARM-EN-MC-1000-15
18	TT FARM-EN-MC-200-18	TT FARM-EN-MC-300-18	TT FARM-EN-MC-400-18	TT FARM-EN-MC-500-18	TT FARM-EN-MC-750-18	TT FARM-EN-MC-1000-18
24	TT FARM-EN-MC-200-24	TT FARM-EN-MC-300-24	TT FARM-EN-MC-400-24	TT FARM-EN-MC-500-24	TT FARM-EN-MC-750-24	TT FARM-EN-MC-1000-24
30	-	TT FARM-EN-MC-300-30	TT FARM-EN-MC-400-30	TT FARM-EN-MC-500-30	TT FARM-EN-MC-750-30	TT FARM-EN-MC-1000-30
36	-	TT FARM-EN-DG-300-36	TT FARM-EN-DG-400-36	TT FARM-EN-DG-500-36	TT FARM-EN-DG-750-36	TT FARM-EN-DG-1000-36
45	-	TT FARM-EN-DG-300-45	TT FARM-EN-DG-400-45	TT FARM-EN-DG-500-45	TT FARM-EN-DG-750-45	TT FARM-EN-DG-1000-45
54	-	-	TT FARM-EN-DG-400-54	TT FARM-EN-DG-500-54	TT FARM-EN-DG-750-54	TT FARM-EN-DG-1000-54
60	-	-	TT FARM-EN-DG-400-60	TT FARM-EN-DG-500-60	TT FARM-EN-DG-750-60	TT FARM-EN-DG-1000-60
72	-	-	-	TT FARM-EN-DG-500-72	TT FARM-EN-DG-750-72	TT FARM-EN-DG-1000-72
90	-	-	-	TT FARM-EN-DG-500-90	TT FARM-EN-DG-750-90	TT FARM-EN-DG-1000-90

# TrueTech Energy

## TT - FARM Series / TABLES



### HEATING TIMES

INPUT KW	Heating Times ( $\Delta T = 37^{\circ}C$ )					
	TANK CAPACITY ( LITER )					
	200	300	400	500	750	1000
6	86 min	129,1 min	172,1 min	215,1 min	322,7 min	430,2 min
12	43 min	64,5 min	86 min	107,6 min	161,3 min	215,1 min
15	34,4 min	51,6 min	68,8 min	86 min	129,1 min	172,1 min
18	28,7 min	43 min	57,4 min	71,7 min	107,6 min	143,4 min
24	21,5 min	32,3 min	43 min	53,8min	80,7 min	107,6 min
30	-	25,8 min	34,4 min	43 min	64,5min	86 min
36	-	21,5 min	28,7 min	35,9 min	53,8 min	71,7 min
45	-	17,2 min	22,9 min	28,7 min	43 min	57,4 min
54	-	-	19,1 min	23,9 min	35,9 min	47,8 min
60	-	-	17,2 min	21,5 min	32,3 min	43 min
72	-	-	-	17,9 min	26,9 min	35,9 min
90	-	-	-	14,3 min	21,5 min	28,7 min



## Product and Technical Support

## TrueTech Energy

Although out of sight, the Truetech heater keeps on working, 24/7, year after year

İmes Sanayi Sitesi A Blok 103 sok. NO:32/B Umraniye , ISTANBUL / TURKEY

Tel (Sales) : 00902164993466  
Fax : 00902164993468  
Email : [info@truetech.com.tr](mailto:info@truetech.com.tr)  
Web : [www.truetech.com.tr](http://www.truetech.com.tr)

- General Management
- Sales & Export Management
- Marketing
- Design | Project Management
- Order Management | Operations Scheduling
- Production
- Research & Development | Quality Management
- Purchase
- IT

