

TrueTech Energy

TT - HYD Series



The **TT - HYD** series is available with storage capacities from 100 to 2,000 Liters. All tanks feature ASME / EN tank construction.

SEAWATER & FRESHWATER HYDROPHORE SYSTEM

TrueTech hydrophore system is designed for compactness and ease of use. For better durability under the different usage, our freshwater hydrophore is made of 304L stainless steel and our sanitary hydrophore is made of 316L or 316Ti stainless steel, with one or multiple pumps.

Special control measure is programmed to handle a drastic drop in pressure from high water usage. For added quality assurance, the pressurised tank used in the system meets the various **IACS members' class certification**

TrueTech hydrophore Units are designed to fulfill the request for fresh water or sea water on board of sea-going vessels and offshore rigs.

STANDARD FEATURES

- ✦ ASTM 304L Stainless steel tank
- ✦ ASME Pressure Relief Valve
- ✦ 125 PSI Working Pressure
- ✦ Hand-Hole Sediment Cleanout
- ✦ Pressure- Gauges
- ✦ Water Level Gauge
- ✦ Pressostats For Pressure Control
- ✦ **Two Pump In Parallel, One In Operation And Another One In Stand-By**
- ✦ Liquid: Suitable For Sea Water Or Fresh Water Below 50 C degree
- ✦ Drain Valve
- ✦ Air Charge Valve
- ✦ Accessory: All Necessary Connection Pipes, Elbows, Flanges And Valves

OPTIONAL FEATURES

- ✦ ASTM 316L Stainless steel tank
- ✦ UV Sterilization Unit
- ✦ Manway (500-Liter and larger capacity- models only)
- ✦ 150 Psi Or 160 Psi Working Pressure
- ✦ Double Pressostats For Pressure Control

Warranty

3-Year limited tank warranty-
See Commercial Warranty Certificate for - complete information



PROJECT-BASED SPECIAL CERTIFICATION & DESIGN



TrueTech Energy

TT - HYD Series

*Large Volume Freshwater & Seawater Hydrophore Set
100 to 2,000 Liters Capacities
Vertical & Horizontal
Types*

Packing: Special wooden case for international export.

Production time: Usually in 20 to 25 days.

TrueTech Energy

TT - HYD Series



ADVANCED FEATURES

- ✦ 200 OR 240 PSI WORKING PRESSURE
- ✦ INTEGRATED CONTROL FUNCTION AND ALARM OPTIONS ACCORDING TO CLIENT'S SPECIFICATIONS

100 % Right Product for Your Systems



- ✦ ISOLATION VALVES (RELIABLE BALL VALVES)
- ✦ SPECIAL SHOCK AND VIBRATION ISOLATORS
- ✦ DUBLEX TANK
- ✦ MARINE TYPE CABLE GROUP
- ✦ DECK STABILIZER SPECIAL MOUNTING FOOT
- ✦ HALOGEN FREE CABLES AND CABLE CHANNELS
- ✦ DISINFECTIVE AND PREVENTIVE SYSTEM FOR LEGIONELLA BACTERIA



*Factory Hydrostatic And
Function Tests Before Shipping*

For additional information please call the factory with the following:

- ✦ Required gallons per hour recovery needed
- ✦ Temperature rise needed
- ✦ Single or Double-Wall Coil
- ✦ If steam is the energy source, the steam pressure?
- ✦ If boiler water is the energy source, the water temperature?



True Tech Energy
TT - HYD Series

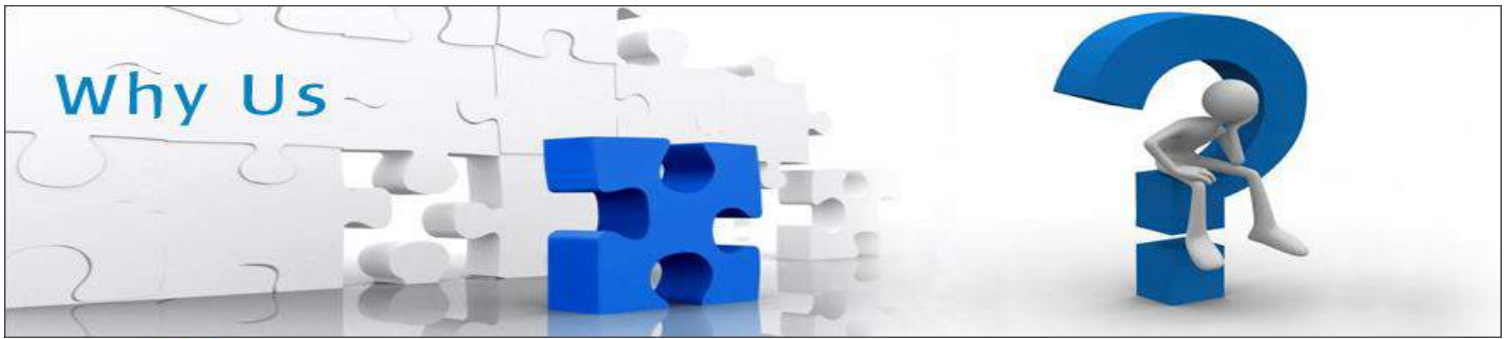
TrueTech Energy TT - HYD Series

PLACE OF USAGE

MARINE

- Vessels
 - Mega Yachts
 - Tugboats
 - Cruise Vessels
 - Offshore Oil Plants
 - Applications for Military Purpose
- Patrol Boats
 - Reinforcement Boats
 - Amphibian Vessel Group
 - Cost Guard Boats
 - Rapid Reaction Boats
 - Sailing School Ships
 - Salvage Ships
 - Replenishment Vessels
 - Cost Guard Rescue Boats



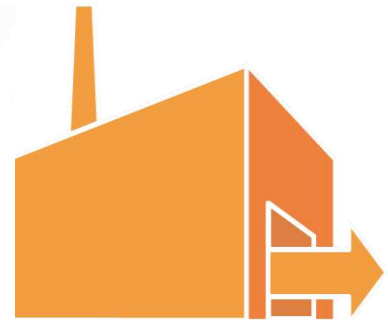


We Delivery Hi Quality Products To Every Corner Of the World



Best Manufacturing & Delivery Time

We guarantee Best Manufacturing & Delivery Time



Best Price

With effective integration , the operation cost is lower down and we will provide a more favorable price and Professional service to your Company



Customer Satisfaction

100% customer satisfaction Guarantee



Save Time & Money





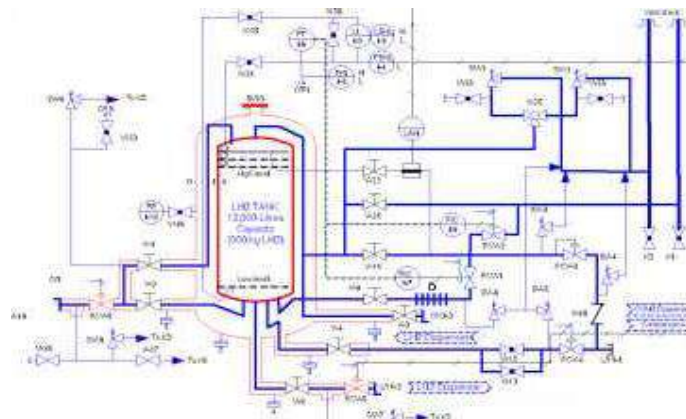
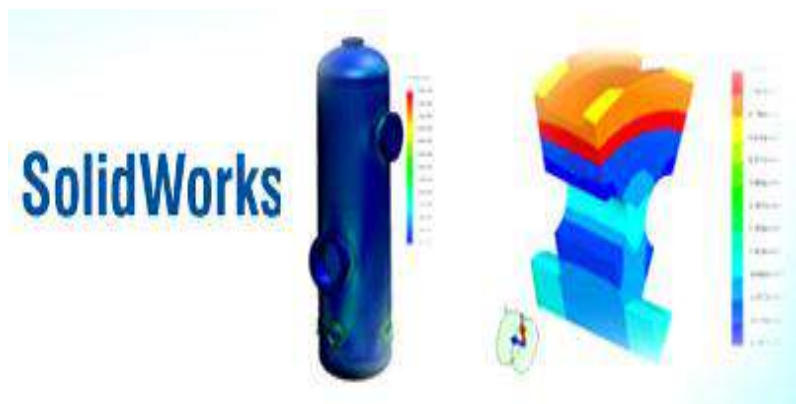
Project-Based Technical Support



3D Mechanical Drawings



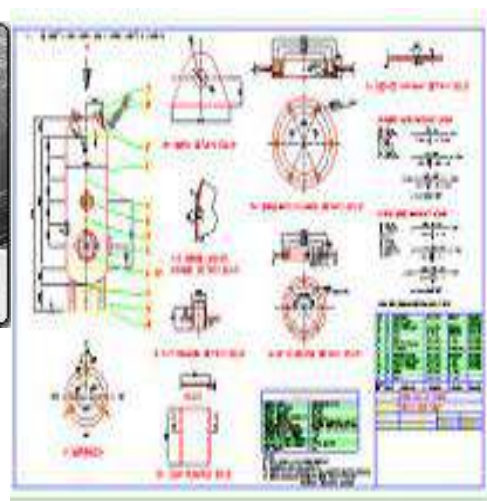
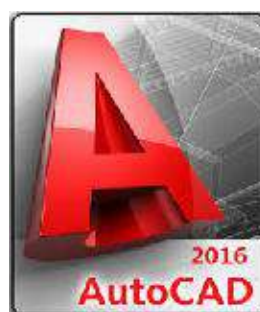
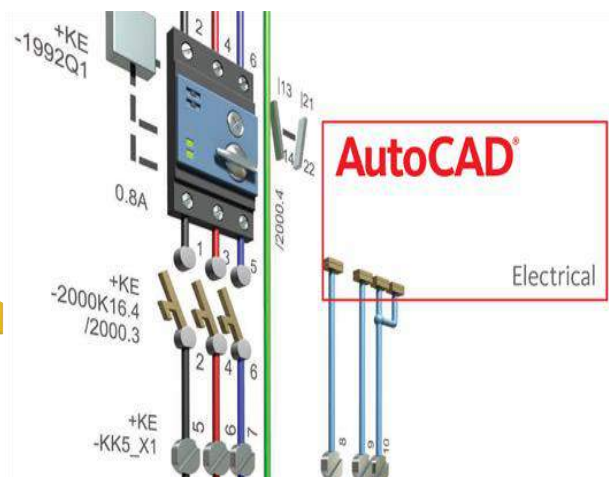
P&ID Drawings



Electrical Drawings & Diagrams



2D Mechanical Drawings

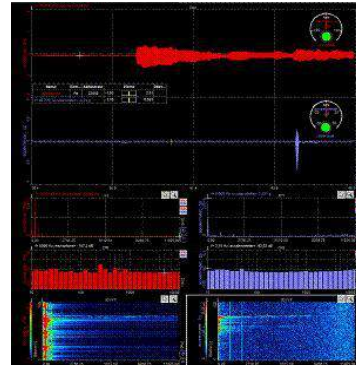
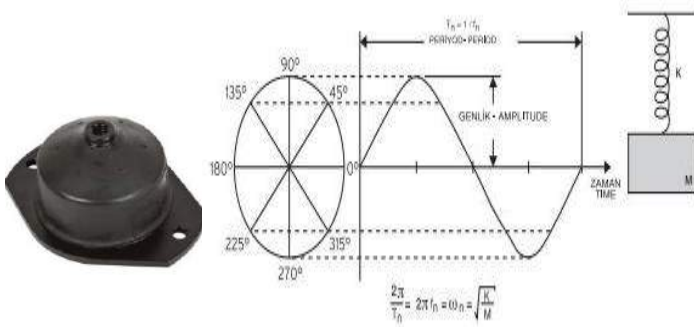




Vibration and shock analysis
(on request)



Acoustic analysis
(on request)



Project Management

Each Project , we will assign a Project Manager and sales person to Follow the whole process from quotation to after- sale



**After-Sales
Technical Support And Services**





PROJECT-BASED CLASSIFICATION



Marine Projects

**BUREAU
VERITAS**



BUREU VERITAS



GL
GL Group

DNVGL



Lloyd's Register
Marine

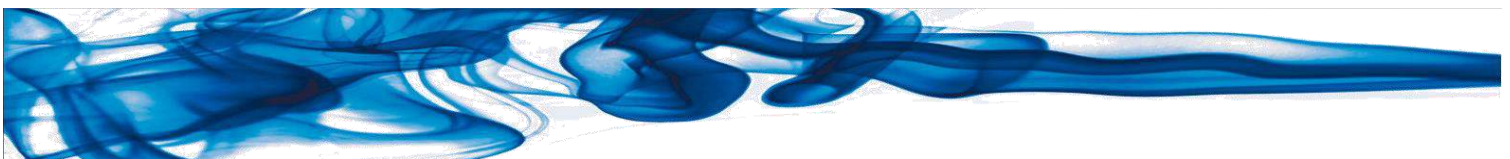
LLOYD'S REGISTER



AMERICAN BUREAU OF SHIPPING



RINA





Why Us



RS

RUSSIAN MARITIME REGISTER OF SHIPPING



IRCLASS
Indian Register of Shipping

INDIAN REGISTER OF SHIPPING

CCS

CHINA CLASSIFICATION SOCIETY

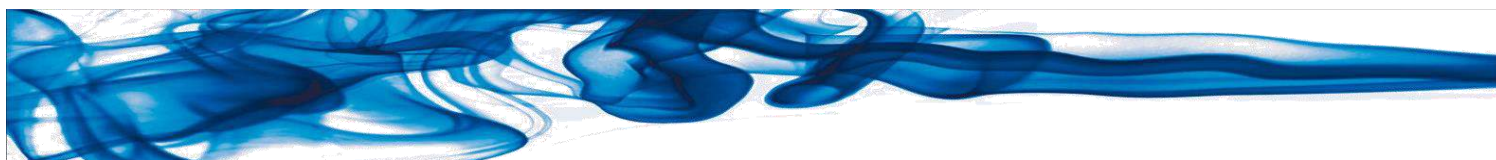
中國船級社

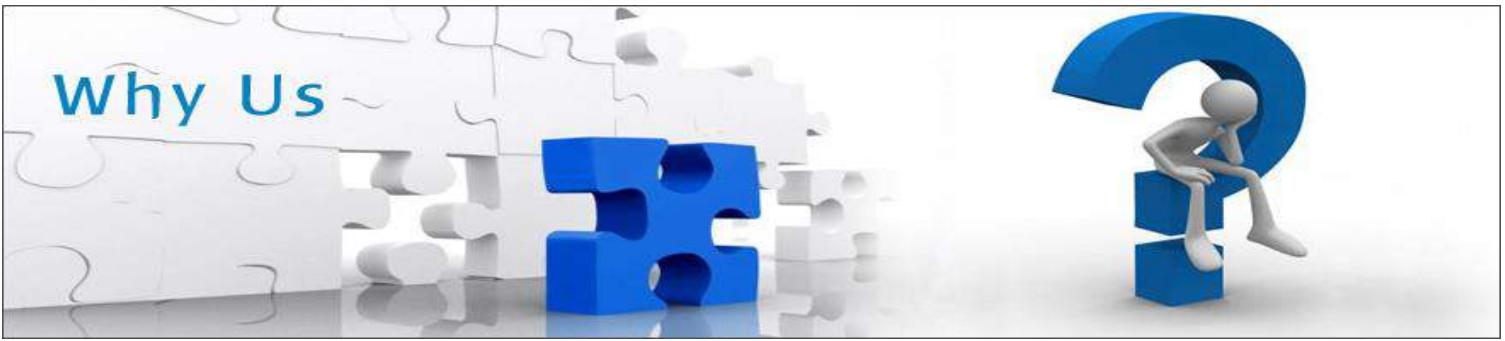
CHINA CLASSIFICATION SOCIETY



ClassNK
NIPPON KAIJI KYOKAI

NIPPON KAIJI KYOKAI





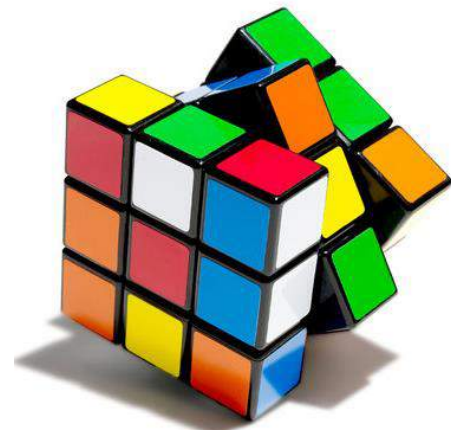
INDUSTRIAL PROJECTS

PRESSURE VESSEL MANUFACTURING AND DESIGN CODES

- AD 2000** MERKBLATT PRESSURE VESSELS DESIGN CODE
- ASME** BOILER AND PRESSURE VESSEL CODE (SEC. VIII DIV.1 & 2 SECTION VIII ,SECTION VIII)
- EN 13445** SERIES UNFIRED PRESSURE VESSELS CODE
- EN 13458** SERIES PRESSURE VESSELS CODE
- TEMA** THE TUBULAR EXCHANGER MANUFACTURERS ASSOCIATION
- CODAP** FRENCH CODE FOR CONSTRUCTION OF UNFIRED PRESSURE VESSEL
- PD 5500** SPECIFICATION FOR UNFIRED, FUSION WELDED PRESSURE VESSELS
- UL 1453** STANDARD FOR ELECTRIC BOOSTER AND COMMERCIAL STORAGE TANK WATER HEATER
- UL 174** STANDARD FOR HOUSEHOLD ELECTRIC STORAGE TANK WATER HEATERS

STORAGE TANK MANUFACTURING AND DESIGN CODES

- API 650** DESIGN AND CONSTRUCTION OF WELDED STEEL TANKS
- API 620** DESIGN AND CONSTRUCTION OF LARGE WELDED LOW PRESSURE STORAGE TANKS
- AWWA D100** WELDED CARBON STEEL TANKS FOR WATER STORAGE
- EN 14015** SPECIFICATION FOR THE DESIGN AND MANUFACTURE OF SITE BUILT, VERTICAL , CYLINDRICAL, FLAT-BOTTOMED, ABOVE GROUND, WELDED, STEEL TANKS FOR THE STORAGE OF LIQUIDS AT AMBIENT TEMPERATURE AND ABOVE



TrueTech Energy TT - HYD Series

IP?



UNLIMITED PRODUCT OPTIONS

INGRESS PROTECTION (IP) PROTECTION DEGREE (IEC 60529)

OPTIONS

The **protection** of enclosures against ingress of dirt or against the ingress of water is defined in **IEC529 (BSEN60529 : 1991)**. Conversely, an enclosure which protects equipment against ingress of particles will also protect a person from potential hazards within that enclosure, and this degree of protection is also defined as a standard.

PROTECTION DEGREE OPTIONS

IEC TYPE	NEMA/UL TYPE
IP 23 (TrueTech Standard)	NEMA 1
IP 30	NEMA 2
IP32	NEMA 3
IP44	NEMA 12
IP55	NEMA 12
IP64	NEMA 3
IP65	NEMA 13
IP66	NEMA 4X,4
IP67	NEMA 6
IP68	
IP69K	





UNLIMITED PRODUCT OPTIONS

MATERIAL OPTIONS FOR

INNER TANK , OUTER JACKET , COMMENT PANEL

HEATING ELEMENTS , ALL PIPE & CONNECTIONS

✚ ASTM 304 ,	EN 1.4301 , UNS S30400 AUSTENITIC
✚ ASTM 304L ,	EN 1.4306 , UNS S30453 AUSTENITIC
✚ ASTM 316 ,	EN 1.4401 , UNS S31600 AUSTENITIC
✚ ASTM 316L ,	EN 1.4404 , UNS S31603 AUSTENITIC
✚ ASTM 316Ti	EN 1.4571 , UNS S31635 AUSTENITIC
✚ ASTM 430 ,	EN 1.4016 , UNS S43000 FERRITIC
✚ ASTM 439 (430 Ti) ,	EN 1.4510 , UNS S43900 FERRITIC



✚ ASTM 2205 EN 1.4462 , UNS S31803 / S32205 FERRITIC – AUSTENITIC (DUBLEX)

✚ CuNi 90/10 (UNS C70600) COPPER-NICKEL ALLOYS

MARINE ENGINEERING STRUCTURES MANLY AS PIPING FOR SEAWATER HANDLING AND HEAT EXCHANGERS IN THE SHIPBUILDING, OFFSHORE, POWER, AND DESALINATION INDUSTRIES.

✚ CuNiFe CUNIFE COPPER-NICKEL-IRON ALLOYS

CORROSION RESISTANT CONNECTORS FOR SEAWATER SYSTEMS

SEAWATER SYSTEMS IMPOSE SPECIAL REQUIREMENTS FOR THE CONNECTORS USED. CUNIFE PRODUCTS, LONG-TERM, SHOW A CONSIDERABLY HIGHER DURABILITY THAN OTHER MATERIALS.

Other special grades under ASTM or UNS designation could be supplied under special request.
Please [contact us](#) for further details.

TrueTech Energy

TT - HYD Series



SMART MANUFACTURING SYSTEM

PROJECT BASED CUSTOM PRODUCTION & DESIGN

Our Flexible, Secure And Efficient Production Processes Offers **High Quality Products**, **Satisfied Customers**, **Sensible Costs**, **Reduced Maintenance Costs**, Long Service Life, **Easy Installation & Commissioning** And Short Lead Times

1 GALLON (3.8 LITERS) – 5.000 GALLON (18.925 LITERS) STORAGE CAPACITY

0.8KW -1600 KW ELECTRICAL POWER

120V-127V-220V-240V-380V-400V-480V-600V-690V VOLTAGE

VOLT FREE OUTPUT CONTACTS FOR BMS

4 BAR (58 PSI) - 20 BAR (290 PSI) WORKING – DESIGN PRESSURE

50HZ-60HZ FREQUENCY

VERTICAL OR HORIZINTAL INSTALLATION

MECHANICAL , DIGITAL , PLC AND PID CONTROL SYSTEMS

IP23 – IP69K PROTECTION DEGREE (SPECIAL CONTROL PANELS)

PROJECT BASED CERTIFICATION

PROJECT BASED MATERIAL OPTIONS

SPECIAL DESIGN AND CALCULATION ACCORDING TO INTERNATIONAL PRESSURE VESSEL CODES AND MATERIAL STANDARDS

SPECIAL DOCUMENTATION AND QUALITY SYSTEM (MILITARY AND NAVY PROJECTS)



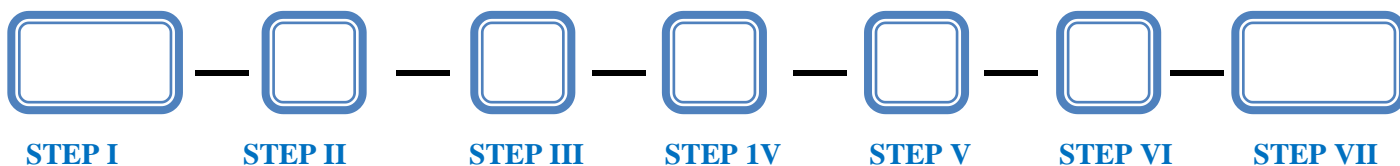
We are at hand to answer all your questions in regards to your specific applications. Please contact TrueTech Energy and we will be happy to help.

TrueTech Energy

TT - HYD Series

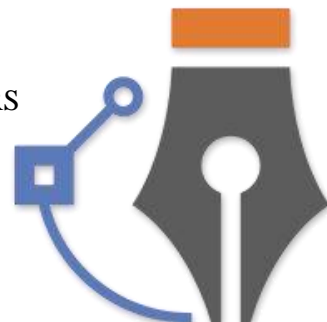


MODEL NUMBER DESIGNATION



STEP I USING PLACE

TT EX	= LARGE CAPACITY ELECTRICAL WATER HEATER SERIES
TT C	= COMMERCIAL SERIES ELECTRICAL WATER HEATER
TT EX MAR	= MARINE SERIES LARGE CAPACITY ELECTRICAL WATER HEATER
TT CMAR	= MARINE SERIES COMMERCIAL ELECTRICAL WATER HEATERS
TT YMAR	= YACHT SERIES ELECTRICAL WATER HEATERS
TT NAVY	= NAVY SERIES ELECTRICAL WATER HEATERS
TT FARM	= FARM SERIES ELECTRICAL WATER HEATERS
TT CONS	= CONSTRUCTION SERIES ELECTRICAL WATER HEATERS
TT FLOW	= INSTANT – FLOW SERIES ELECTRICAL TANKLESS WATER HEATERS
TT CONT	= CONTAINER SERIES ELECTRICAL WATER HEATERS
TT ECO	= ECONOMIC SERIES ELECTRICAL WATER HEATERS
TT HYD	= MARINE SERIES HYDROPHORE TANK
TT FWPS	= MARINE SERIES FRESH WATER PRESSURE SET



STEP II DESIGN

EN = **EN** PRESSURE VESSEL CODE

AS = **ASME** BOILER AND PRESSURE VESSEL

UL = **UL** ELECTRIC BOOSTER AND COMMERCIAL STORAGE TANK WATER HEATER

STEP III CONTROLLER TYPE

MC = MECHANICAL

DG = DIGITAL

PL = PLC

SS = SOLID STATE

STEP IV STORAGE CAPACITY

STEP V HEATING POWER (KW)

STEP VI VOLTAGE . PHASE . FREQUENCY

STEP VII MATERIAL

G	= GALVANIZE COATING
SS 304	= 304 QUALITY STAINLESS STEEL
SS 304L	= 304L QUALITY STAINLESS STEEL
SS 316	= 316 QUALITY STAINLESS STEEL
SS 316L	= 316L QUALITY STAINLESS STEEL
SS 316Ti	= 316Ti QUALITY STAINLESS STEEL
SS CNF	= CuNiFe COPPER-NICKEL-IRON ALLOYS
SS CN	= CuNi 90/10 COPPER – NICKEL ALLOYS
SS DX	= DUBLEX

TrueTech Energy

TT - HYD Series

System Descriptions

1. Pumps (Two Pump In Parallel, One In Operation And Another One In Stand-By)

2. Hydrophore Tank (Freshwater or Seawater)

3. Water Level Gauge

4. Pressure Gauge

5. Hand Hole Or Manway

(500 Liter And Larger Capacity Models Only)

6. Safety Valve

7. Pressostats For Pressure Control

8. Special Handling Chassis

9. Drain Valve

10. Air Charge Valve

11. Hour Meters for pump motors

12. Special Control Panel



(Integrated Control Function And Alarm Options According To Client's Specifications)

Accessory : All Necessary Connection Pipes, Elbows, Flanges And Valves , Inlet/Outlet Connections , Name Plate

TrueTech Energy

TT - HYD Series



HYDROPHORE TECHNICAL DATA

TT HYD SERIES

TANK CAPACITY (LITER)

MODEL	150	300	400	500	750	1000	1500	2000
	TT HYD 150	TT HYD 300	TT HYD 400	TT HYD 500	TT HYD 750	TT HYD 1000	TT HYD 1500	TT HYD 2000
MATERIAL	AISI 304L / AISI 316 / AISI 316 Ti / DUBLEX / CuNi 90/10 / CuNiFe							
WORKING PRESSURE (BAR)	6	6	6	6	6	10	10	10
DESIGN PRESSURE (BAR)	7	7	7	7	7	12	12	12
TEST PRESSURE (BAR)	9	9	9	9	9	15	15	15
WORKING TEMPERATURE (C)	45	45	45	45	45	45	45	45
DESIGN TEMPERATURE (C)	50	50	50	50	50	50	50	50
PUMP TYPE	Vertical Multistage Centrifugal Pumps , 50 Hz / 60 Hz							
PUMP QUANTITY (Pcs)	2	2	2	2	2	2	2	2

We are at hand to answer all your questions in regards to your specific applications
Please contact TrueTech Energy and we will be happy to help



Product and Technical Support

TrueTech Energy

Although out of sight, the Truetech heater keeps on working, 24/7, year after year

İmes Sanayi Sitesi A Blok 103 sok. NO:32/B Umraniye , ISTANBUL / TURKEY

Tel (Sales) : 00902164993466
Fax : 00902164993468
Email : info@truetech.com.tr
Web : www.truetech.com.tr

- General Management
- Sales & Export Management
- Marketing
- Design | Project Management
- Order Management | Operations Scheduling
- Production
- Research & Development | Quality Management
- Purchase
- IT

